

Release Notes

The 5.0.34 release of BizInsight contains many updates and improvements. This document provides information on the changes and special instructions where needed regarding installing or using the new features.

1.1. Major Features

1.1.1. Improved Installer

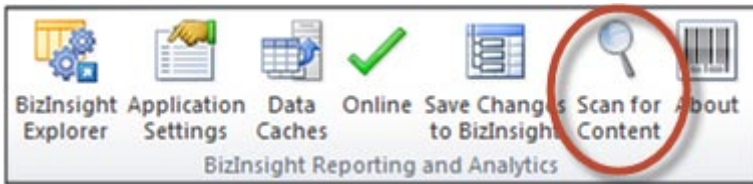
Prior to 5.0.34, customers would have to enter key paths in the Application Settings dialog after entering most of them during the installation. The installation now saves the values entered in an app.config file in the bin5 subdirectory of the BizInsight installation folder.

- A. **Shared Directory for Content files** – This should be the path to the network folder that contains your .biz files and your BizContent add-in files (.dll, .dna and .xll).
- B. **Shared Directory for Administration files** – This should be the path to the network folder that contains your license file (.lic file) and your .users files.
- C. **Reporting Services Server** – Enter the Web Service URL for your Report Server site.
- D. **Reporting Services Folder Name** – Enter the name of the folder on the Reporting

Services site that contains the BizContent reports (.RDLs). If uncertain of this folder name, browse to the Reporting Services web service URL to determine which folder contains the BizContent reporting services reports.

1.1.2. "Scan for Content"

This process will scan the configuration path directory for BizContent add-in files. All files that are found will be copied to the local workstation and automatically registered within Excel. No manual registration of Content XML files is necessary when installing and configuring additional add-ins.

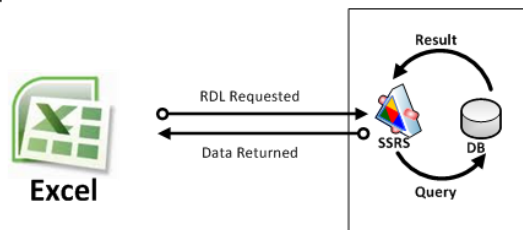


1.1.3. XMLFast Render format

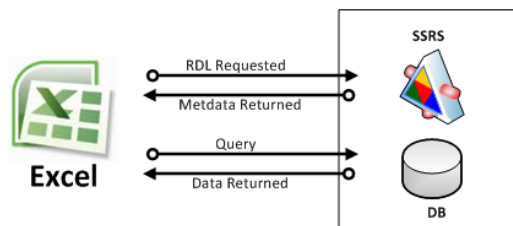
A fast, low footprint render format has been added that creates in-memory caches by using reporting services as a metadata store only and not an execution engine. This new feature can be enabled in the Application Settings dialog.

XMLFast Overview

XMLFast - Off



XMLFast - On



Application Setting Option: XMLFAST

The screenshot shows a configuration window with several options and buttons. The options are:

- Enable Formula Editor Pop-up
- Enable Refresh Timer
- Enable Cache Information Dialog
- Enable XMLFAST (circled in red)
- Persist SQL Authentication (Session Only)

Buttons include:

- Clear Credentials
- Local Content Path

IMPORTANT: This feature requires the following configuration changes:

- TCP/IP remote connection must be enabled for SQL Server when using XMLFAST and allows dynamic porting such as port 1433. If using dynamic ports, the SQL Browser service must be running on port 1434 and server firewall restrictions adjusted.
 - Firewall exceptions should be:
 - TCP Port 1433
 - UDP Port 1434
 - Program exception for sqlservr.exe
- The BizInsight user's rights in Reporting Services must be increased.
- Encrypted credentials in the Reporting Services data source must be removed and the data source must be configured for either Windows authentication or to prompt the user for SQL credentials. **IMPORTANT:** SQL credentials cannot be used for any content packs that use Linked Servers to retrieve data from the accounting system database.

This new render format resolves the following issues:

- a. Customers using SQL Express were experiencing excessively long times to load data into memory .
- b. Creation of duplicate caches when analysis sets and functions used the same Reporting Services RDL.
- c. All server side parameters in cache have _1 on the end of the column name.
- d. Empty DataSet results when using an ATOM feed and no report parameters
- e. "Column Not Found" being returned when a data set is empty.
- f. List columns are not in the order specified in the Reporting Services RDL.

XMLFAST Testing Results

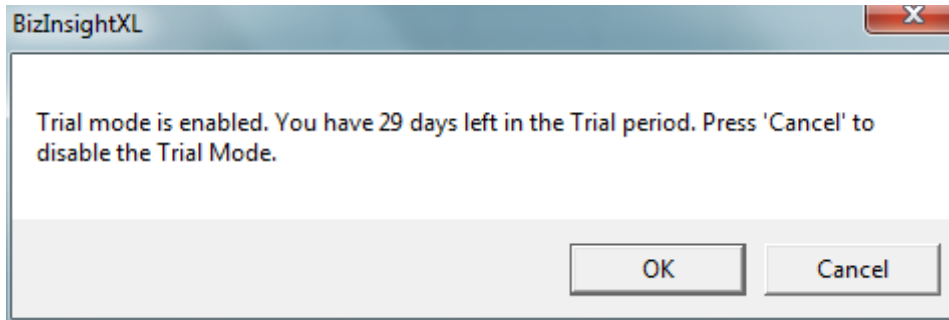
Server Information	Software	BizInsight
Windows 7 Professional SP1 64-bit	Excel 2010, 64-bit version	BizInsight 5.0.34 build
Xeon Dual Core 2.53 GHz	SQL Server 2008 R2 database	MAS500 GL Version 1.0.4.0 64-bit compatibility

8gb RAM		
---------	--	--

XMLFAST ON					
	Total Refresh (sec)	Data Execution Time: 2009 (sec)	Data Execution Time: 2010 (sec)	Execution Time	Iteration Count
Test Result 1	44.35	6	4	34.35	33516
Test Result 2	42.89	5	4	33.89	33516
Test Result 3	45.21	5	4	36.21	33516
Test Result 4	43.29	6	4	33.29	33516
Test Result 5	43.38	5	4	34.38	33516
XMLFAST OFF					
	Total Refresh (sec)	Data Execution Time: 2009 (sec)	Data Execution Time: 2010 (sec)	Execution Time	Iteration Count
Test Result 1	145.6	65	39	41.6	33516
Test Result 2	130.32	53	43	34.32	33516
Test Result 3	131.34	55	41	35.34	33516
Test Result 4	133.61	59	40	34.61	33516
Test Result 5	132.64	49	47	36.64	33516

1.1.4. 30-day Trial Option

A 30-day trial option has been added to the product. All users will see the following message when starting Excel the first time after installing this new version.



Choose “Cancel” if you have purchased the product and have a BizInsight.lic file to prevent this message from popping-up each time Excel is started.

The About dialog will still display a date for the Trial Expires but provided a license is found in the Administration Path, BizInsight will continue to function beyond the indicated date.



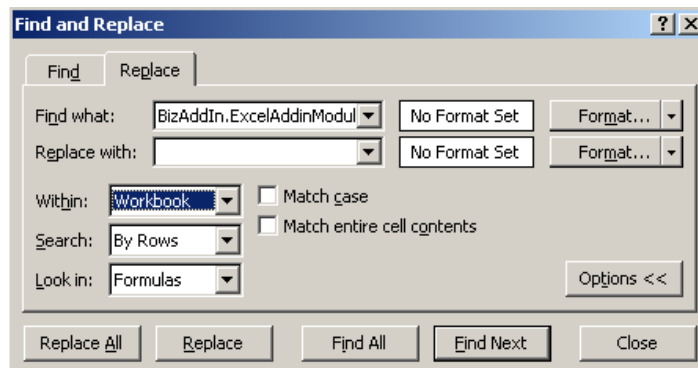
1.1.5. Convert Reports from V4 to V5

This version allows V4 customers to run their existing reports in 5.0 without the need to re-write their reports immediately. Customers are strongly urged to re-write their reports in order to be able to drill down on functions and take advantage of any new 5.0 capabilities not available with V4 functions. In addition, V4 customers who move to V5 will not benefit from the performance improvements made to the product unless V4 functions are converted to V5 functions.

Example V4 function opened in Excel with 5.0.34 installed.

	A	B	C			
1	ABC Distribution					
2	Income Statement					
3						
4	Fiscal Year	2009				
5	Fiscal Period	03				
6				Locations		
7			00	01	02	03
8						
9		Revenues				
10	400	Sales	0	235,767	7,734	4,848
11	425	Returns & allowances	(3,482)	0	0	0
12		Net Sales	(3,482)	235,767	7,734	4,848
13	450	Cost of Sales	0	(72,805)	(2,831)	(31,788)
14		Gross Margin	(3,482)	162,962	4,903	(26,939)

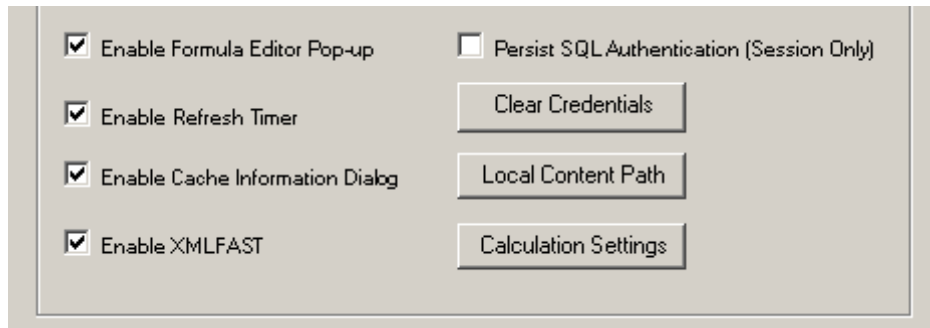
Customers upgrading to 5.0.34 from V4 will have to search for “BizAddIn.ExcelAddinModule1.” and replace with nothing for their reports to run in 5.0.34. The user’s BizFunctions.xml must be copied to the content share directory that contains the 5.0 .biz and content client files (.dll, .dna, .xll).



1.2. Major Enhancements

1.2.1. Application Settings Changes

Several options have been added to the Application Settings dialog to allow users better control over BizInsight behavior. Users can now specify whether they want to see the caching dialog when refreshing their reports, whether they want to see a pop-up dialog showing the total time taken for their report to refresh and whether they want the Formula Editor to automatically open when a function is dragged and dropped (non-XP operating systems only).

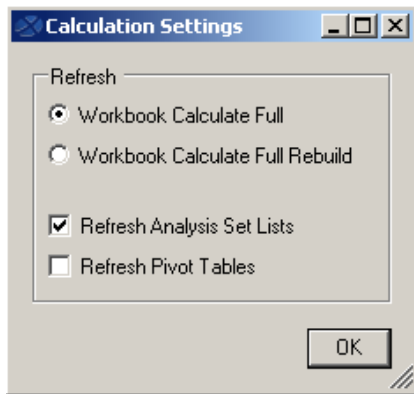


1. Application Settings Enable Options

- **Enable Formula Editor Pop-up** – optional setting to display function information during Excel calculations.
- **Enable Refresh Timer** – optional setting to enable or disable refresh timer.
- **Enable Cache Information Dialog** – optional setting to disable background worker thread pop-up.
- **Enable XMLFAST** – using reporting services as a metadata store only and not an execution engine.
- **Persist SQL Credentials** – Persist SQL Credentials for duration of the session. Not enabled by default.

2. Application Settings Buttons

- **Clear Credentials** – This button can be used to clear SQL credentials that have been persisted for the current Excel session and will cause the user to be re-prompted to supply new SQL credentials.
- **Local Content Path** – When the Scan for Content button is used to register BizContent Excel add-ins on a client workstation, it copies the BizContent client files locally. The default directory is the user's Documents directory. This option provides the ability to change the local directory to which the files are copied. BizContent Excel add-in files will be copied to a subdirectory named "BizContent" of the path specified.
- **Calculation Settings** – This button provides users access to options that allow them greater control over Excel's calculation behavior.

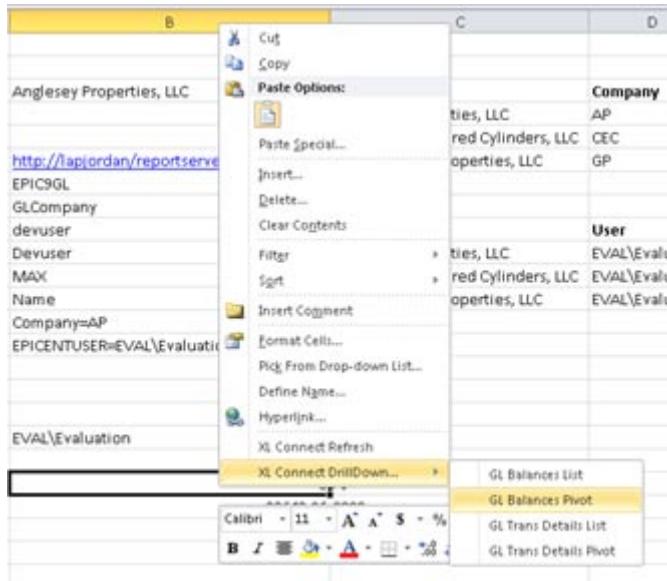


Calculation Settings	Description
Refresh	Users can control whether an Excel Workbook Calculate Full or a Workbook Calculate Full Rebuild is used when a BizInsight report is refreshed. The default option of Workbook Calculate Full should be the option used unless the report is not refreshing all functions. Choosing the Workbook Calculate Full Rebuild will cause Excel to rebuild the dependency tree before recalculating functions. This will result in a more complete recalculation but the tradeoff will be that the recalculation of the report will be slower.
Refresh Analysis Set Lists	This option allows a user to control whether BizInsight analysis set lists contained in a report are refreshed when BizInsight performs a refresh. Unchecking this option results in a faster refresh but analysis lists will not be refreshed and would display stale data.
Refresh Pivot Tables	This option allows a user to control whether Excel pivot tables contained within the BizInsight workbook are refreshed. One caution about this option. Any pivot tables that use an external data source for their data source could cause an Excel crash if that external data source is not accessible. This option is turned off by default.

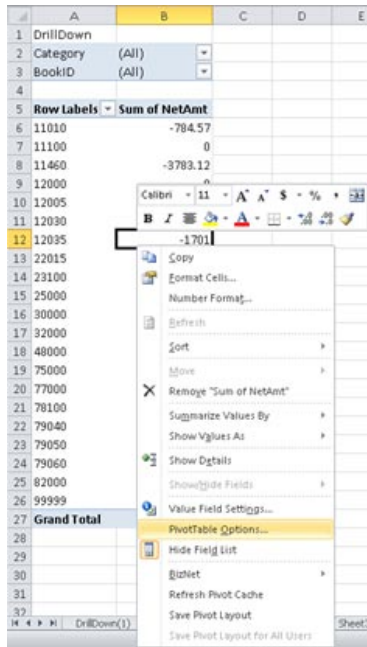
1.2.2. Pivot Layouts per Function

Prior to 5.0.34, the option to save pivot layouts was to save by Reporting Services RDL file. This meant that all functions that used the same RDL would all use the same pivot layout. In 5.0.34, the ability to save a pivot layout by function has been added.

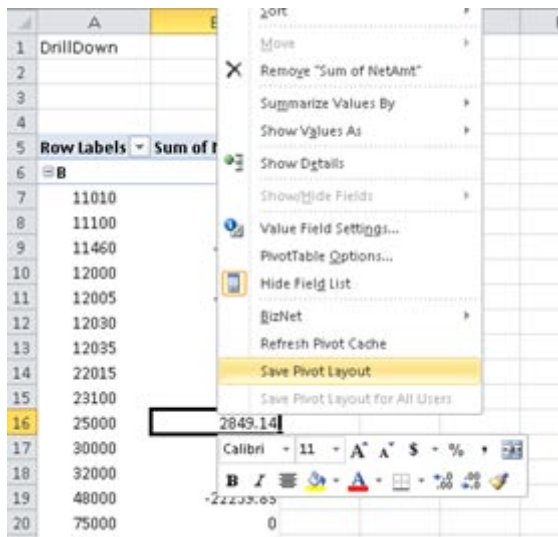
- A. Start by drilling down on a function. The drill-down can have a default layout or a previously saved layout.



- B. With the resulting pivot table, right-click inside the pivot table and select the PivotTable options



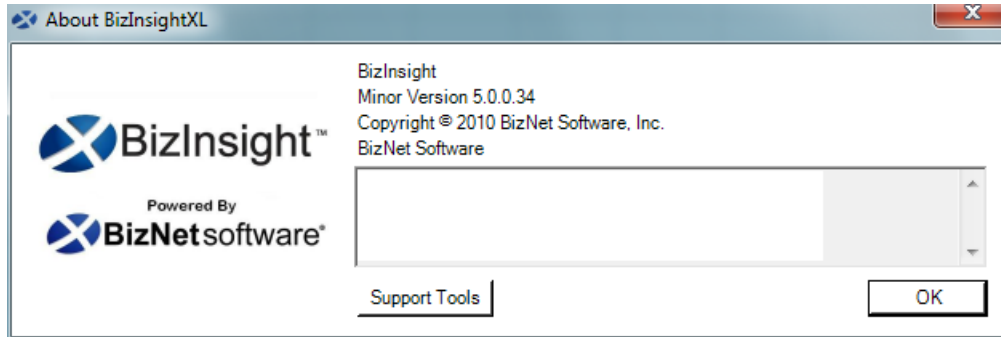
- C. Arrange the Pivot Layout as desired and then right-click and click the “Save Pivot Layout” button.



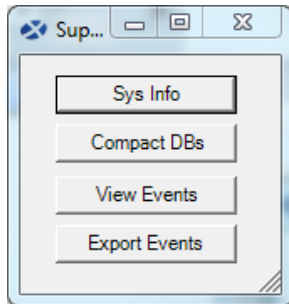
- D. Then drill-down again from the function and the new layout should be applied every time you drill-down. The code is backwards compatible so all previously saved layouts will still be valid.

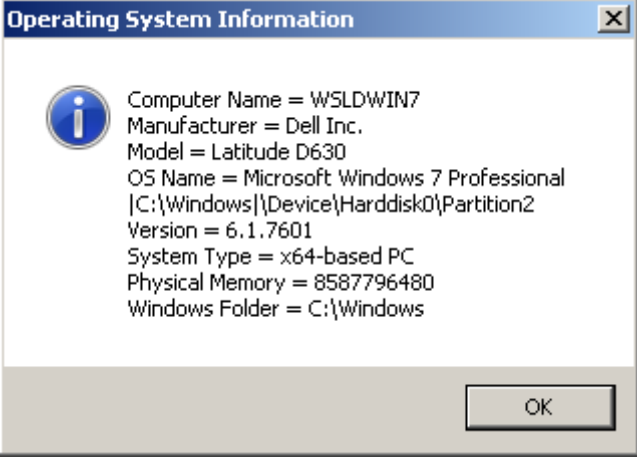
1.2.3. Support Tools Dialog

- A. Hit the “About” button in BizInsight, then click the “Support Tools” button

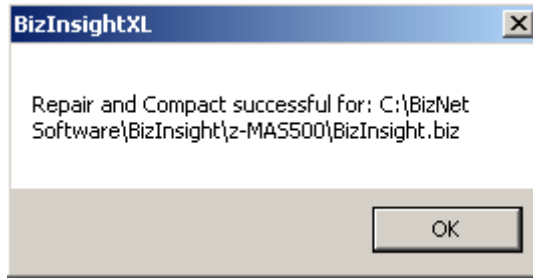


- B. Support Tool Dialog pop up screen



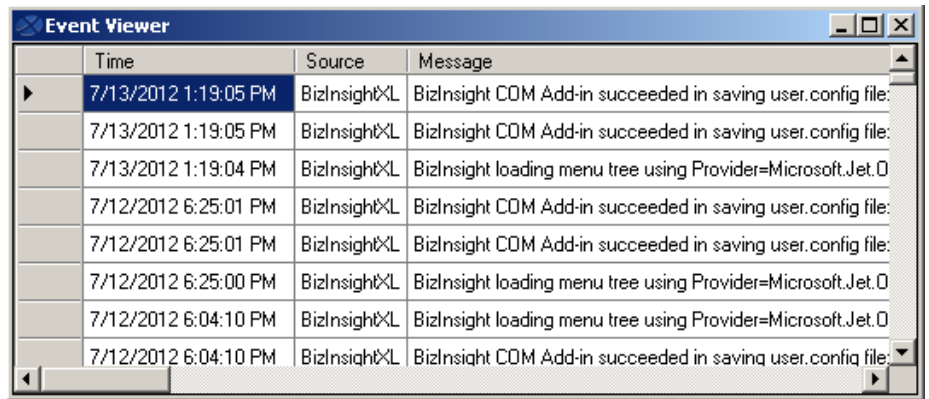
Support Tool Dialog	Description
SysInfo	<p>This button will display system information gathered from the client workstation that may be asked for when you contact BizNet Software support for help with the product.</p> 
Compact DBs	<p>This button will compact and repair the BizContent .biz files. These files can become corrupt. By default BizInsight will try to detect corruption in these</p>

files on startup of BizInsight and will automatically attempt to compact and repair the files but this button allows a user to manually compact and repair the .biz files if needed. After clicking the Compact DBs button, the following dialog will display to indicate when the process is complete:



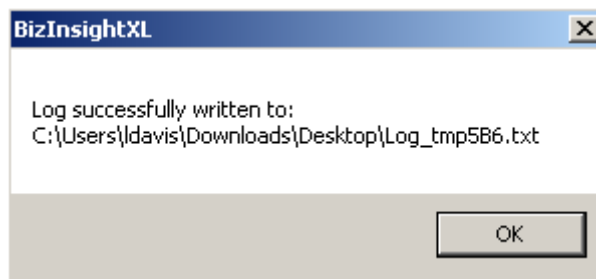
View Events

BizInsight adds an event log to Microsoft Window’s Event Viewer tool. Errors and other information related to BizInsight’s functioning will be logged to this event viewer log file. Use this button to view this information.



Export Events

Use this button to export the events written to the BizNet Software event viewer log.



1.2.4. Support for SQL authentication

BizInsight has been enhanced to support SQL authentication. Users will be prompted for their SQL credentials at the first data retrieval call and the supplied credentials will be stored for that Excel session and used for subsequent data retrievals. This new feature can be enabled in the Application Settings dialog.

IMPORTANT: SQL authentication cannot be used for any content packs that use Linked Servers to retrieve data from the accounting system database.

1.2.5. Configurable cache duration

The cache duration for the in memory caches is now configurable. The default duration is 40,000 seconds or 12 hours. To adjust this value, edit the CacheExpiration setting in the app.config file located in the bin5 subdirectory of the BizInsight installation directory.

1.3. Major Revisions/Addressed Bugs

The following bugs have been addressed in the 5.0.34 release.

1. Default SSRS Server and Default SSRS Report Folder is hardcoded in analysis set lists.
2. Frequent corruption of .biz databases addressed with automatic and manual repair and compact capabilities.
3. Formula Editor pop-up is no longer enabled on Windows XP.
4. Added ability to cancel error messages that occur during refresh. This will suppress all error messages for the remainder of that Excel session and will allow refreshes that are resulting in errors to finish without user intervention and allow customers to save their reports. Closing and reopening Excel will restore error messaging.
5. Better error handling when functions cannot find the server, the RDL, or unauthorized access to the report server as well as other key BizInsight files such as .biz files.

1.4. Minor Revisions/Addressed Bugs

1. The ability to refresh pivot caches has been provided as a Calculation Settings option in the Application Settings dialog.
2. In memory cache RAM utilization on the client workstation has been improved.
3. When Offline, an Excel Refresh should give an accurate number of BizData calls.

2. Known Issues

2.1. Drilldown menu is disabled

When the total number of characters passed to a function exceeds 255 characters, the drilldown option will be disabled. Drilldown uses the ExcelApp.Evaluate which has a 255 character limit.

The workaround for the issue is to reduce the total number of values being passed in to the function. Reduce the number of values being passed in to the function and break them into separate functions and sum with an Excel function.

2.2. Increased user permissions required for XMLFast

Admins must assign correct user privileges in Reporting Services. In testing, only Browser permission level denies access when using the XMLFast feature.

2.3. The BizInsight installer will no longer lay down .USERS files.

These files will be included in the Shared Directory Files download of the Content packs. With the addition of the Scan For Content feature, no content specific files or centrally managed files are managed by the client installer. A Content Pack installer is planned for a future release which will configure the server files (.biz, .rdl, .rds, .xll, .dna, .dll) and Scan For Content is planned to handle the transfer of content to the client workstations.

3. Documentation Updates

All BizInsight documentation has been updated with information pertinent to this release. The Installation Guide contains updated instructions that address correct configuration for the Scan for Content feature as well as the additional configuration requirements for the XMLFast feature.

The Guide to Using BizInsight has been updated to provide information on the new features available in the Application Settings dialog.